



Galápagos & South America
1° 8' N 83° 34' W

Galápagos Escape

Explore Darwin's islands aboard the elegant *National Geographic Islander II* through 2026, and new in 2027, sail aboard the new *National Geographic Gemini*. Witness the iconic wildlife that sparked the theory of evolution by natural selection, snorkel pristine waters teeming with sea lions and sea turtles, and hike black-sand beaches and lush highlands. As with our classic, 10-day expeditions, honed over more than 50 years, each voyage is crafted to offer a diverse perspective of the archipelago with multiple adventures daily on land and undersea.

From

\$ 6,067 / per person
Does not include flights



DATES

Year round



DURATION

7-8 Days



SHIPS

National Geographic Gemini
National Geographic Islander II



STARTS AT

Quito or
Guayaquil,
Ecuador



ENDS AT

Quito or
Guayaquil,
Ecuador

Highlights

- ★ Experience all Galápagos offers, with departures on Tuesday, Thursday and Saturday
- ★ Snorkel and kayak among colorful fish, sea turtles, penguins, and playful sea lions, and walk among colonies of wildlife and seabirds unfazed by your presence
- ★ Maximize your time in the islands with options for exploration every day including hiking, kayaking, snorkeling, and more
- ★ Add a three-night post-expedition extension in Quito, Ecuador





Day by day

■ DAY 1

Guayaquil or Quito, Ecuador

Arrive in Ecuador, either in Quito, Ecuador's capital city in the Andes, or in the coastal city of Guayaquil, and take an included transfer to your hotel for an overnight stay. Both cities are well-served by international carriers, and Galápagos flights start and end in Quito with a stop in Guayaquil. Guests in Guayaquil stay at the Hotel del Parque, a 44-room Relais & Châteaux hotel set along the river in lush tropical gardens. In Quito guests have the choice of several hotels, including a convenient airport hotel.

Note that Quito sits at a 9,350 ft elevation. It is an alternative option to Guayaquil, at no additional cost, and recommended if you opt to reserve [additional hotel nights](#) and pre-voyage tours of the city.

Arrival Time: Anytime.

Arrival City: Quito or Guayaquil, Ecuador

◇ DAY 2

Quito or Guayaquil / Galápagos Islands / Embark Ship

Fly to Baltra in the center of Galápagos, a little world unto itself in the Tropical Pacific, where you'll be welcomed by your naturalist staff as you begin exploring the islands.

Meals included: breakfast, lunch, dinner

◇ DAYS 3-6

Galápagos Islands

Listed below is a sample of islands you may visit during your expedition. Expeditions begin and end at Baltra and include visits to Isla Santa Cruz and a careful selection of diverse islands. No two days are alike. Each itinerary offers an optimal balance

of wildlife, landscapes and experiences. All ship itineraries are subject to Galápagos National Park regulations.

North Seymour: Look for nesting frigatebirds, plus land and marine iguanas, and enjoy a beautiful coastal walk.

Santa Cruz: Head to the lush, green highlands to look for giant tortoises roaming in the wild.

Isabela: Toast crossing the Equator at Volcán Ecuador, northernmost of Isabela's six great shield volcanoes. Keep an eye open for whales and dolphins as you explore these nutrient-rich waters, once the haunt of whalers and pirates.

Fernandina: One of the most active oceanic volcanoes in the world, Fernandina is the youngest and most pristine island in Galápagos—and home to the strange flightless cormorant and the largest marine iguanas.

San Cristóbal: Search for red-footed boobies and the endemic mockingbird and lava lizard—found only on this easternmost island.

Española: Located in the extreme southeast of the archipelago, this island is home to swallow-tailed gulls, Española mockingbirds, Nazca boobies and, seasonally, the world's only population of waved albatrosses at Punta Suárez.

Floreana: Follow a trail past a pink-tinted lagoon frequented by flamingos. Snorkel among sea lions and abundant fish, or cruise along Champion Islet by Zodiac. Visit the famous wooden barrel at Post Office Bay and learn about its unusual postal system.

Meals included: lunch, breakfast, dinner

◇ DAY 7

Galápagos Islands / Disembark Ship / Guayaquil or Quito

Disembark this morning for a return flight to the mainland, where you'll transfer to Hotel del Parque in Guayaquil. In Quito there are [several hotel options](#). The afternoon and evening are at your leisure. You may be able to take advantage of overnight flights home. Ask your expedition specialist about joining a culturally rich post-voyage extension to [Quito and Otavalo](#), a celebrated market town.

Meals included: breakfast

■ DAY 8

Guayaquil or Quito

After breakfast, transfer to the airport and board flights home, unless you have arranged for additional nights or an extension.

Departure Time: Anytime on day 8, or after 7:00 p.m. local time on day 7.

Departure City: Guayaquil or Quito, Ecuador

8-Day Expedition

Quito or Guayaquil, Ecuador → Quito or
Guayaquil, Ecuador

2026 Departure Dates

Aboard *National Geographic Islander II*

21 Feb	26 Feb			
07 Mar	12 Mar	21 Mar	26 Mar	
04 Apr	09 Apr	18 Apr	23 Apr	
02 May	07 May	16 May	21 May	30 May
04 Jun	13 Jun			
02 Jul	11 Jul	16 Jul	25 Jul	
08 Aug	13 Aug	22 Aug	27 Aug	
05 Sep	10 Sep	19 Sep	24 Sep	
03 Oct	08 Oct	31 Oct		
05 Nov	14 Nov	19 Nov	28 Nov	
03 Dec	17 Dec	26 Dec	31 Dec	

2027 Departure Dates

Aboard *National Geographic Gemini*

03 Apr	08 Apr	17 Apr	22 Apr	
01 May	06 May	15 May	20 May	29 May
03 Jun	12 Jun	17 Jun	26 Jun	
01 Jul	10 Jul	15 Jul	24 Jul	29 Jul
07 Aug	12 Aug	21 Aug	26 Aug	
04 Sep	09 Sep	18 Sep	23 Sep	
02 Oct	07 Oct	21 Oct	30 Oct	
18 Nov	27 Nov			
02 Dec	11 Dec	16 Dec	25 Dec	30 Dec

Aboard *National Geographic Islander II*

09 Jan	14 Jan	23 Jan	28 Jan
06 Feb	11 Feb	20 Feb	25 Feb
06 Mar	11 Mar	20 Mar	25 Mar

2028 Departure Dates

Aboard *National Geographic Gemini*

08 Jan	13 Jan	22 Jan	27 Jan
05 Feb	10 Feb	19 Feb	24 Feb
04 Mar	09 Mar	18 Mar	23 Mar

Alternative Routes

Visit Expeditions.com for more information.

2026 Departure Dates

03 Mar, 17 Mar, 31 Mar, 14 Apr, 28 Apr,
12 May, 26 May, 09 Jun, 23 Jun, 07 Jul,
21 Jul, 04 Aug, 18 Aug, 01 Sep, 15 Sep,
29 Sep, 13 Oct, 27 Oct, 10 Nov, 24 Nov,
08 Dec, 22 Dec

2027 Departure Dates

05 Jan, 19 Jan, 02 Feb, 16 Feb, 02 Mar,
16 Mar, 13 Apr, 27 Apr, 11 May, 25 May,
08 Jun, 22 Jun, 06 Jul, 20 Jul, 03 Aug,
17 Aug, 31 Aug, 14 Sep, 28 Sep, 12 Oct,
26 Oct, 23 Nov, 07 Dec, 21 Dec

2028 Departure Dates

04 Jan, 18 Jan, 01 Feb, 15 Feb, 29 Feb,
14 Mar



National Geographic Gemini

Guests

48

Cabins

27

A fully equipped Galápagos expedition ship for 48 guests

The newly christened *National Geographic Gemini* joins the Lindblad Expeditions-National Geographic Galápagos fleet with a history and heritage of small-ship expedition cruising. Launched in 2001 from the same shipyard as *National Geographic Orion*, *National Geographic Gemini* is a highly maneuverable, shallow-draft expedition ship purpose built to explore remote areas with ease.

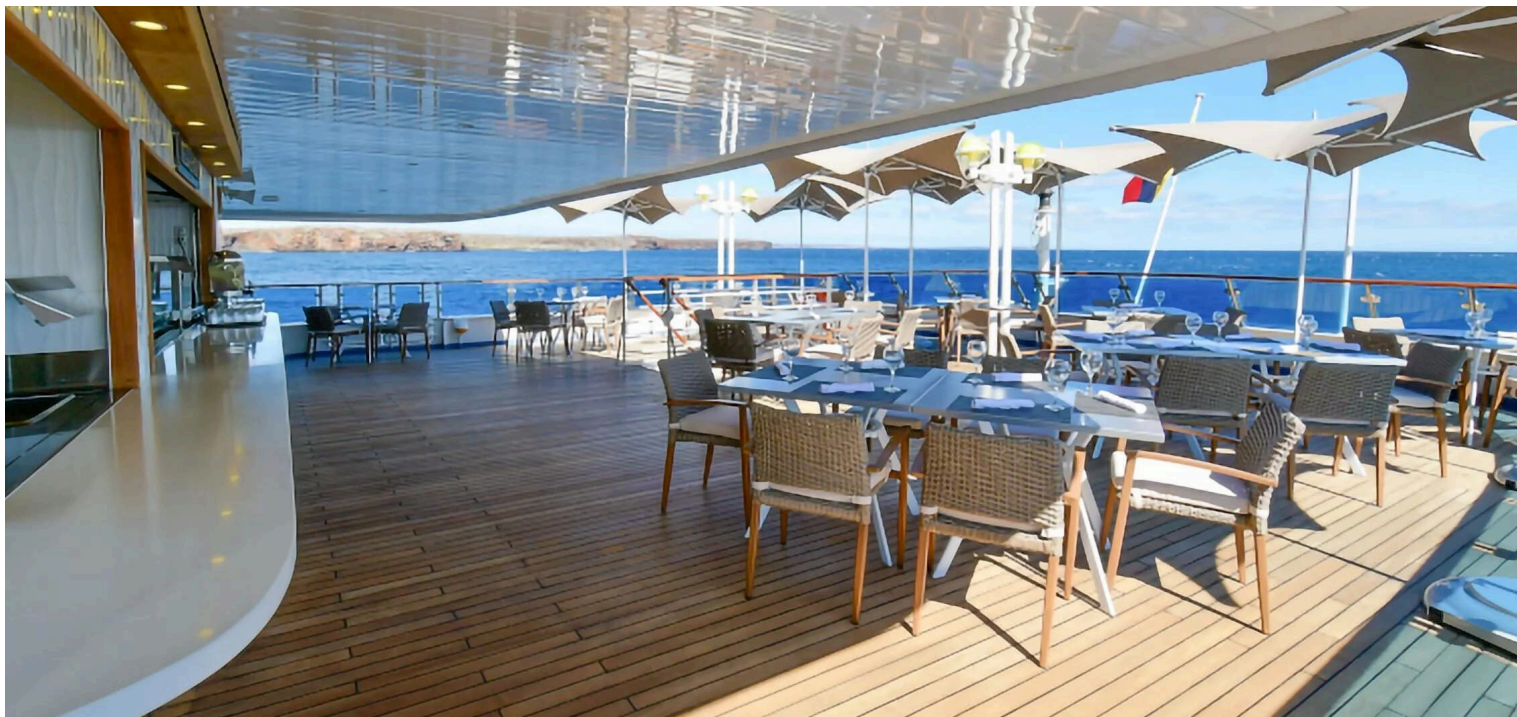
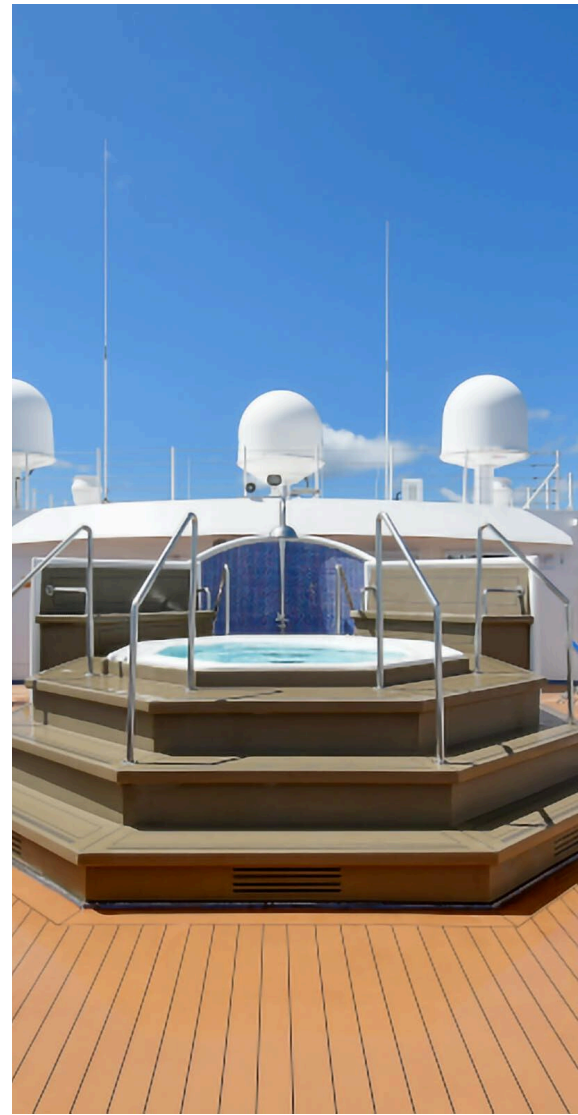
Sailing year round with a maximum of 48 guests on weeklong voyages departing Fridays, *National Geographic Gemini* offers guests the choice of larger suites, cabins with balconies, and a mix of doubles, solos and triples.

All cabins are ocean facing and with ample storage, beds that can be configured as a queen or two twins, a sofa, desk, television and a well-stocked mini fridge. Bathrooms are large and feature glass showers. Suite 601 on the Upper Deck (Category 7) is the largest in the Lindblad Expeditions-National Geographic Galápagos fleet with a separate living room, forward-facing balcony and floor-to-ceiling windows. Cabins on the Bridge Deck (Category 4 & 5S) all have private balconies with seating.

Enjoy the outdoors on the Upper Deck and Bridge Deck, which features a whirlpool hot tub, and windowed fitness center and spa. An outdoor café on the Lounge Deck accommodates all guests in a single open seating, as does the restaurant on the Marina Deck. The open, windowed lounge for presentations and informal gatherings has a large bar and well-stocked library and adjacent reception area.

Carrying a fleet of quick-to-deploy Mark VI Zodiacs, kayaks and stand-up paddleboards, the ship is well-equipped for exploring the islands and marine reserve. It is also stocked with snorkeling gear for all guests, including shortie wetsuits.

National Geographic Gemini provides an authentic sense of place informed by our decades-long relationships with local communities and conservation groups. Contributing to the fully immersive Ecuadorian experience on board is the passionate and knowledgeable Ecuadorian crew. Meals are designed to support the community—comprising locally sourced farm-to-table and ocean-to-table ingredients.

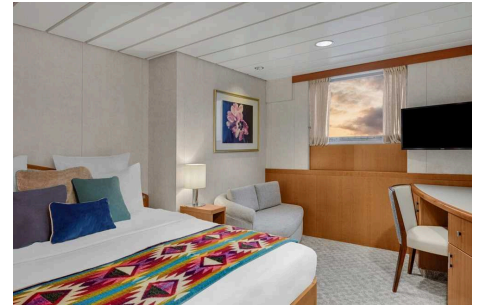


Cabin Categories

Category 1

Lounge Deck: #411, 414, 415, 416

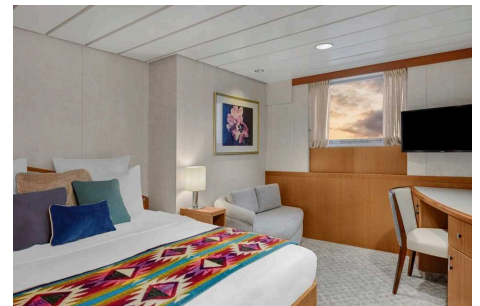
Forward cabins, outside facing with a large window, queen or two twin beds, ample storage, sitting area, desk, mini fridge and television. Bathrooms with a glass shower and amenities. 160 square feet.



Category 2 Solo

Lounge Deck: #401 and 402

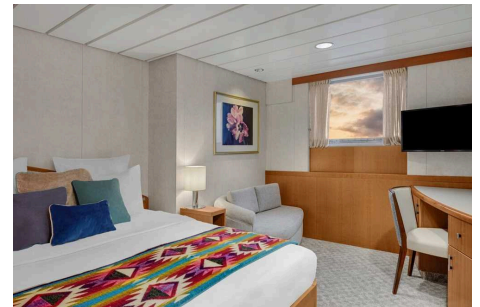
Outside facing with a large window, choice of either a queen or two twin beds, ample storage, sitting area, desk, mini fridge and television. Bathrooms with a glass shower and amenities. Equal in size and amenities to other Category 2 cabins. 160 square feet.



Category 2

Lounge Deck: #403-408, 410, 412

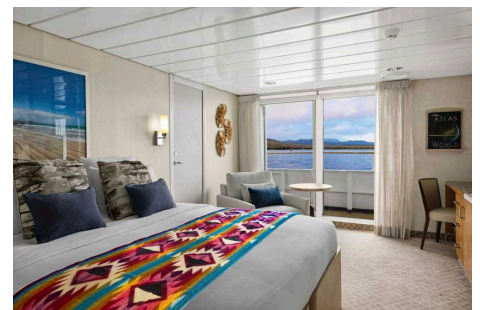
Outside facing with a large window, queen or two twin beds, ample storage, sitting area, desk, mini fridge and television. Bathrooms with a glass shower and amenities. 160 square feet.



Category 4

Bridge Deck: #500-508

Outside facing with floor-to-ceiling glass doors, 50-square-foot balcony with seating, queen or two twin beds, ample storage, sitting area, desk, mini fridge and television. Bathrooms with a glass shower and amenities. 205 square feet. 503/505 and 504/506 connect. 500/503 with convertible sofa bed for triple occupancy.



Category 5 Solo

Bridge Deck: #509

Outside facing with floor-to-ceiling glass doors, 50-square-foot balcony with seating, one queen bed, ample storage, sitting area, desk, mini fridge, and television. Bathrooms with a glass shower and amenities. 175 square feet.



Category 5

Upper Deck: #602

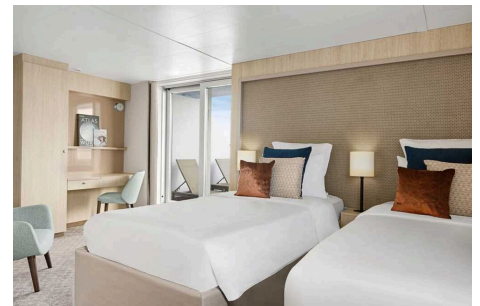
Outside facing with floor-to-ceiling glass doors, 50-square-foot balcony with seating, queen or two twin beds, ample storage, sitting area, desk, mini fridge and television. Bathrooms with a glass shower and amenities. 205 square feet. Connects to 604 as family suite.



Category 6

Upper Deck: #604

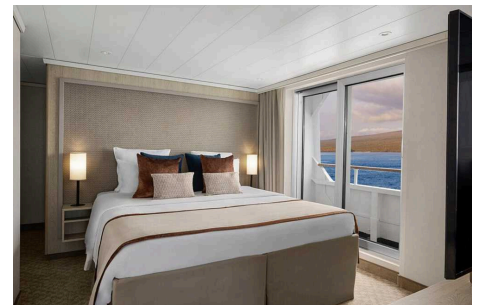
Forward facing with floor-to-ceiling glass doors, 195-square-foot forward-facing balcony with seating, queen or two twin beds, ample storage, sitting area, desk, mini fridge, and television. Bathrooms with a glass shower and amenities. 250 square feet. Connects to 602 as family suite.



Category 7

Upper Deck: #601

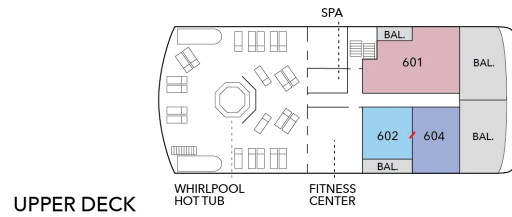
Forward facing with floor-to-ceiling glass doors, separate living room with sofa bed for triple occupancy, and 195-square-foot forward-facing balcony with seating. Bedroom with queen or two twin beds, 50-square-foot side balcony, ample storage, mini fridge, and television. Large bathroom with rain shower. 460 square feet.



Deck Plans

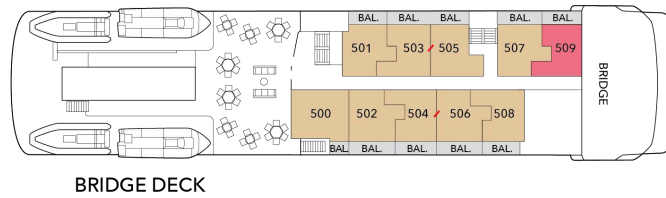
Upper Deck

- Category 5
- Category 6
- Category 7



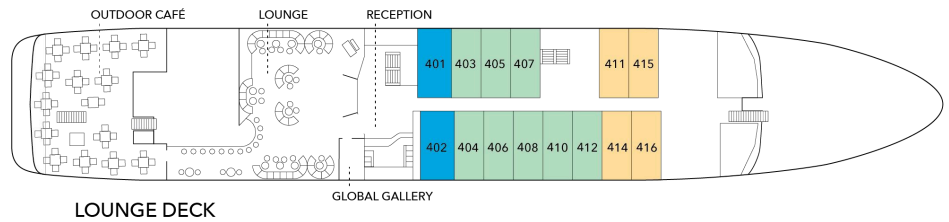
Bridge Deck

- Category 4
- Category 5 Solo

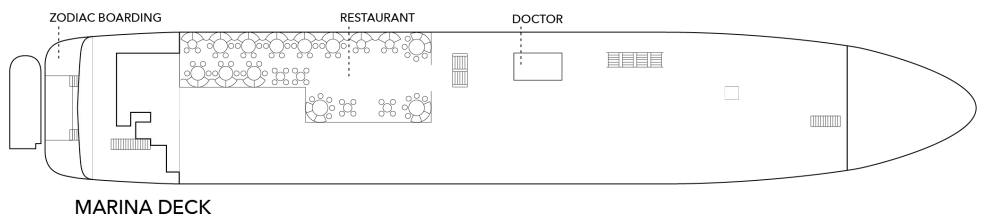


Lounge Deck

- Category 1
- Category 2 Solo
- Category 2



Marina Deck



Ship amenities

Accommodations with Balconies

National Geographic Gemini offers an array of accommodation types, including 13 cabins with private balconies. Cabins on the Bridge Deck (Category 4 & 5S) have private balconies with seating. Suite 601 on the Upper Deck (Category 7) is the largest in the Lindblad Expeditions-National Geographic Galápagos fleet with a separate living room, forward-facing balcony, side balcony, and floor-to-ceiling windows. Cabin 604, which connects with Cabin 602 for the ultimate family suite, is forward facing with a large balcony.

Open-Air Decks

The Upper Deck features an outdoor shower, whirlpool hot tub with adjacent shaded seating area and a windowed fitness center and spa perfect for relaxing. The outdoor café on the Lounge Deck can accommodate all guests in a single seating.

In Good Company

Explore Galápagos in the company of veteran Lindblad Expeditions-National Geographic expedition staff, a veteran Expedition Leader, Undersea Specialist, Certified Photo Instructor, and licensed naturalists. Staff are certified as Field Educators to offer the National Geographic Explorers-in-Training program for kids and teens.

**Note:**

All images are for reference only. The final ship design will evolve following a multi-million-dollar renovation.



National Geographic Islander II

Guests

48

Suites

26

A New Ship with Just 26 Spacious Staterooms and Suites Sailing the Galápagos Islands

Lindblad Expeditions is thrilled to welcome the National Geographic Islander II to our fleet. Sleek and elegant, she will sail year-round in the Galápagos Islands and elevate the guest experience to an entirely new level.

National Geographic Islander II is a gracious expedition vessel that feels like a private yacht. With only 26 staterooms and suites, and accommodating just 48 guests, she sails with a 1:1 guest-to-crew ratio.

Special features include teak decks, indoor-outdoor dining options, an impressive observation deck, and new amenities like a climate-controlled Marina and a dedicated Science Hub.

National Geographic *Islander II* provides an authentic sense of place, drawing on our decades of partnering with local communities and conservation groups. Contributing to the fully immersive Ecuadorian experience on board are Ecuadorian staff and locally sourced and sustainable farm-to-table and ocean-to-table culinary ingredients, as well as artisan spa elements and handcrafted textiles, art, and décor all regionally created.

An authentic, immersive experience in the Galàpagos

The *National Geographic Islander II* celebrates Lindblad's deep connection to the islands, Ecuador, and its people with a deeply immersive and truly unique Ecuadorian cultural experience. The carefully considered food and beverage program highlights the four regions of Ecuador with locally sourced farm-to-table ingredients. Regional ingredients can even be found in spa products. From Ecuadorian shipboard staff to artwork, textiles, and décor created by local artists and artisans and Ecuadorean music heard throughout the ship, guests will experience the beauty and wonder of Ecuador both on and off the ship.



Cabin Categories Bridge Deck

Category SU

Guest Suite: #301, 302, 306, 308, 310, 311, 312, 316

280 sq. ft. with two panoramic windows, twin/king convertible beds, seating area with sofa, lounge chair, and marble double-sink bathrooms with rain shower. #301, 302, 306, 308, 310-312, 316. #312 & #316 are triple occupancy with sofa made up as third bed. Third person rates are one-half the double occupancy rate. Connecting Suites: #301/303, 302/306



Category SO

Solo Suite: #315, 318.

280 sq. ft. with two panoramic windows, twin/king convertible beds, seating area with sofa, lounge chair, and marble double-sink bathrooms with rain shower; dedicated solo but otherwise identical to SU category.



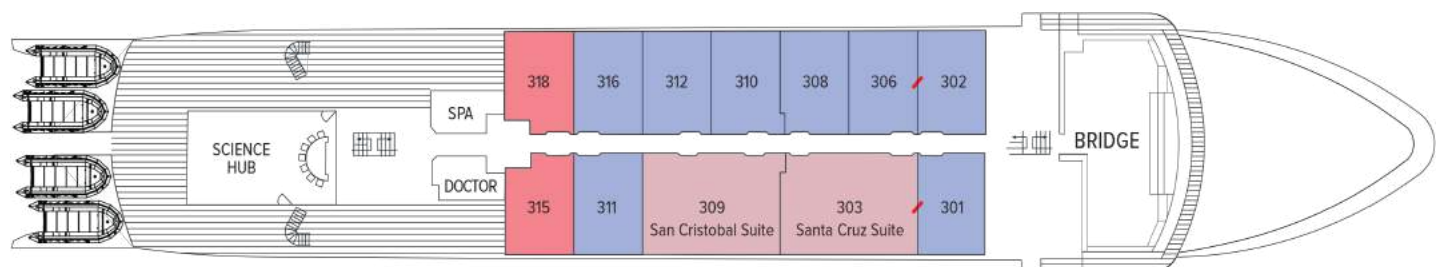
Category IS

Islander Suite: #303, 309

515 sq. ft. with two panoramic windows, twin/king convertible beds, separate living areas with sofa, table and chairs, two lounge chairs, larger bathroom with both rain shower and tub. Triple occupancy with sofa made up as third bed. Third person rates are one-half the double occupancy rate. Connecting Suites: #301/303, 302/306



Bridge Deck



Cabin Categories Main Deck

Category IS

Islander Suite: #209, 218

515 sq. ft. with two panoramic windows, twin/king convertible beds, separate living areas with sofa, table and chairs, two lounge chairs, larger bathroom with both rain shower and tub. Triple occupancy with sofa made up as third bed. Third person rates are one-half the double occupancy rate.



Category SU

Guest Suite: #205/207

280 sq. ft. with two panoramic windows, twin/king convertible beds, seating area with sofa, lounge chair, and marble double-sink bathrooms with rain shower. #203, 205-208, 210-212, 215, 220. Connecting Suites:



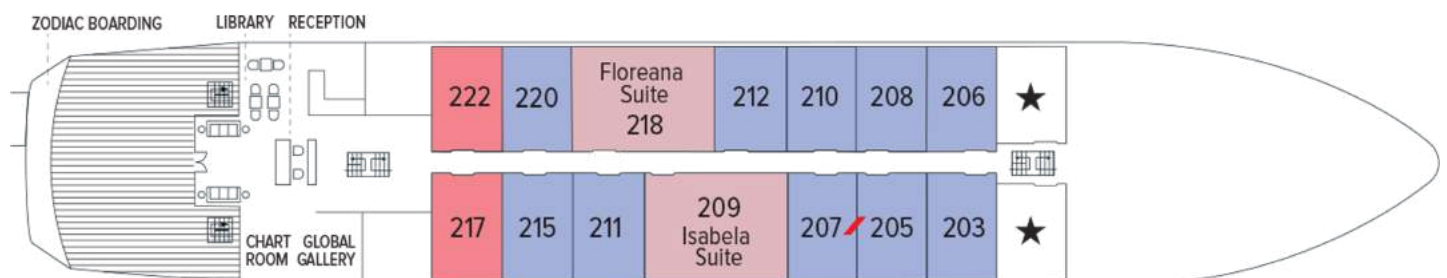
Category SO

Solo Suite: #217, 222

280 sq. ft. with two panoramic windows, twin/king convertible beds, seating area with sofa, lounge chair, and marble double-sink bathrooms with rain shower; dedicated solo but otherwise identical to SU category.

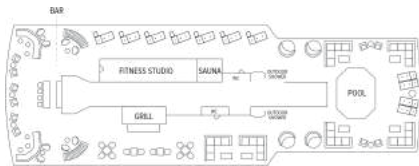


Main Deck

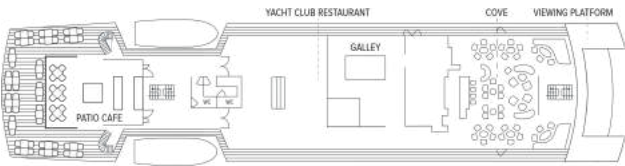


Deck Plans

Observation Deck

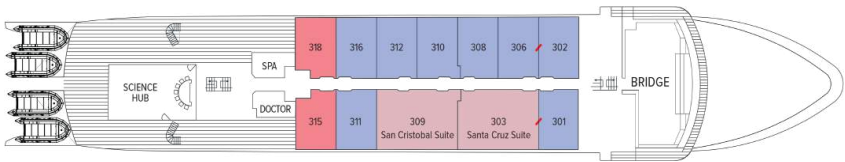


Promenade Deck



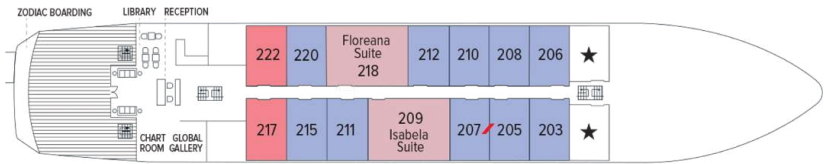
Bridge Deck

- Category SU
- Category SO
- Category IS



Main Deck

- Category IS
- Category SU
- Category SO



Marina Deck



Ship amenities

Indoor-Outdoor Dining

Enjoy meals in the expanded al fresco Patio Café, sophisticated Yacht Club Restaurant on the Promenade Deck, or Grill on the Observation Deck, where there's also a bar and ample seating to host events. Here, guests gather for wine tastings, chocolate tastings, and Bubble-Qs—BBQs made extra celebratory with Champagne. The convenient 24-hour beverage and snack stations in the Bar and Library are other welcome amenities.



Science Hub

Outfitted with scientific equipment, the exciting new Science Hub continues the Lindblad Expeditions-National Geographic legacy of supporting conservation and research. Equipped for underway oceanography, interactive video presentations, and an enhanced photo experience, the Science Hub is also a place for young guests in the [National Geographic Global Explorers Program](#) to experience hands-on learning.

Public Spaces

The ship's public spaces enhance the connection to the islands. Guests will find an open Bridge, surrounding teak decks, and a forward-viewing area. Two dining areas accommodate all guests in a single seating. The Cove, which has a bar, is the setting for daily Recaps. Other ship features include a Reception area with glass doors that lead to an open teak Viewing Deck, a Plunge Pool, a Chart Room, the Global Gallery, Library, Marina, Swim Platform, and Zodiac boarding area.



Expedition Tools

National Geographic Islander II carries a fleet of kayaks and stand-up paddleboards, a glass-bottom boat, an expanded flotilla of versatile Zodiacs, complete snorkel gear for adults and children, video microscope, and Science Hub.

The newly refitted teak-appointed marina is spacious and climate-controlled, designed for guests to comfortably get in and out of expedition gear.



Expanded Expedition Staff

The Expedition Team, led by a veteran Expedition Leader, includes a five Naturalists, Undersea Specialist, Certified Photo Instructor, and Certified Field Educators who run our exclusive [National Geographic Global Explorers Program](#) for kids and teens.

Special Offers

10% SAVINGS

Valid on new bookings made between July 15 through July 29, 2025. Receive savings of 10% from the cabin fare on select 2027-2028 departures. Valid on all departures starting March 27, 2027 aboard National Geographic Resolution; April 2, 2027 aboard National Geographic Delfina, National Geographic Endeavour II and National Geographic Islander II; April 3, 2027 aboard National Geographic Gemini; April 7, 2027 aboard National Geographic Orion; April 26, 2027 aboard National Geographic Venture; May 2, 2027 aboard National Geographic Quest; and November 19, 2027 aboard National Geographic Explorer. Not combinable with other promotional offers, subject to availability, not applicable on airfare or extensions. Book online or call for details.

SUITE EXCLUSIVES

Spacious living areas and incredible views immerse you in the beauty of your marine surroundings. Our new Suite Exclusives package helps make your voyage all the more memorable. [Learn more](#)

CELEBRATE LIFE'S MILESTONES

Celebrate a milestone with a group of eight or more and enjoy a special amenity package including: 5% savings on voyage fares, custom group photo, US\$150 shipboard credit for the group, and other special gifts. Milestone celebration to be communicated at time of booking.

SAVE 5% TRAVELING AS A GROUP

Save 5% when traveling as a group of eight or more people. Valid on voyage fares only and not applicable on extensions or airfare. Deposit, final payments, and

cancellation policies for group travel vary from our regular policies. Valid for new bookings only, subject to availability, and may not be combined with other offers. Call for details.

PAY BY DEBIT: EARN A \$100 ONBOARD CREDIT

The \$100 onboard credit offer is applied after the final payment and requires 85% of the cost of the voyage to be placed on a debit card. Maximum of one \$100 onboard credit per cabin. The \$100 onboard credit is a non-refundable, non-transferable credit that can be used for various onboard purchases such as global gallery and spa treatments. It has no cash value, cannot be refunded if not fully utilized, and will be forfeited if not fully redeemed by the end of the voyage. This offer is combinable with other offers. If the booking is altered or canceled, the onboard credit may be forfeited, and it cannot be transferred if the booking is moved to another guest. Lindblad Expeditions reserves the right to modify or cancel the offer without prior notice. Offer applies to Lindblad Expeditions' owned ships only. Offer valid only for Debit Cards issued in the United States for payments made from the United States.

COMBINING OFFERS

Certain offers may be combinable, up to two savings opportunities, except where noted otherwise. For example, travel with a group of 8 or more on back-to-back expeditions, and take advantage of both savings.

This is the summary of the Offer

TEST: Lorem ipsum dolor sit amet consectetur adipiscing elit, tempor sollicitudin velit cras feugiat nunc varius, mattis enim dapibus vitae nisl fusce. Fusce tristique dictumst ligula nam primis habitant sed

proin, potenti viverra auctor ultrices diam ut cubilia
facilis penatibus, rhoncus tortor senectus egestas
praesent quisque tincidunt. Imperdiet ante quis nulla
elementum ad suscipit metus vivamus a, dictum
mattis mus accumsan nam pretium nec tempor, purus
interdum platea augue nibh turpis non lacus.

Included in price

Air transportation (except where specified as included); extensions; passport; visa; immigration fees; meals not indicated; travel protection plan; items of personal nature such as select premium alcoholic beverages and laundry.

Not included in price

Airfare* (except flights when indicated as included); pre- and post-expedition extensions; additional hotel nights (except when indicated as included); crew gratuities; private transfers; laundry, spa treatments, and phone services (except when indicated as included); travel protection plans; and passport, visa, and immigration fees.

*Recommended flight costs include flight(s) that take place during the date range of your trip to transport travelers from one itinerary destination to another. This cost also includes ground transportation, luggage transfer, and airport assistance. If you prefer to arrange your own flights privately, have alternate means of transport, or wish to modify at a later time, please contact an Expedition Specialist at 1.833.400.0831

Travel protection plan

We strongly recommend our guests to take advantage of our Travel Protection Plan. This plan offers comprehensive coverage to protect you from cancellation fees, costs incurred due to trip delays/interruption, damage or loss of baggage, medical assistance, and evacuation during your travels. Our Travel Protection Plan is available for U.S. residents only, and may be purchased any time prior to final payment due date, Travel Protection premiums are non-refundable once plan is purchased. Learn more about our Travel Protection "Plus" Plan: <https://www.expeditions.com/terms-conditions/travel-protection-plan/>

Cancellation policy

Review our cancellation policy: <https://www.expeditions.com/cancellation-policy/>